

DETTAGLI
- Sfoderata
- Doppia asola

TAGLIE
XS ÷ XXXL
Slim Fit

COLORE
000 Nero
120 Panna

TESSUTO
100% poliestere
220 g / m²



Le misure indicate si riferiscono alle taglie **S** per i capi femminili, **L** per i capi maschili. Per i capi a taglia unica le misure indicate sono effettive.

COLORI DISPONIBILI



000 Nero



120 Panna

TABELLE TAGLIE
E CORRISPONDENZE

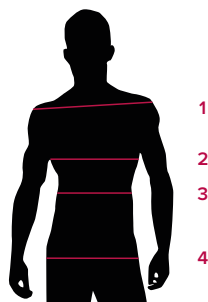
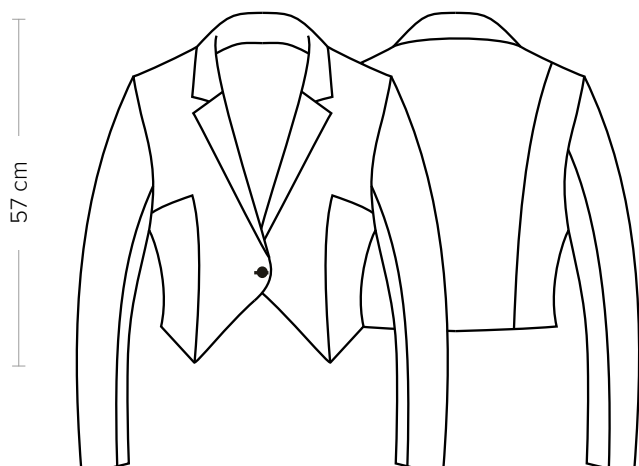


TABELLA ST-C5 NORMAL FIT							
TAGLIA	XS	S	M	L	XL	XXL	XXXL
1 - SPALLE	38,00	39,00	40,00	41,00	42,00	43,00	44,00
2 - CIRCONFERENZA TORACE	80-84	85-88	89-92	93-96	97-102	103-108	109-114
3 - CIRCONFERENZA VITA	68-76	77-80	81-85	86-88	89-95	96-102	103-111
4 - CIRCONFERENZA BACINO							

GUIDA ALLE TAGLIE **1)** Prendere le misure anatomiche (corpo con abbigliamento intimo) senza stringere mantenendo ben teso il metro. **Nota:** nel caso vogliate indossare dei camici già con dell'abbigliamento sotto prendete le misure già abbigliati. **2)** Nel caso tra le misure prese vi fosse una misura a cavallo fra 2 taglie vi consigliamo di prendere quella più grande. **3)** Le misure della tabella sono espresse in centimetri.



DETAILS
- Unlined
- Cufflink

SIZES
XS ÷ XXXL
Slim Fit

COLOURS
000 Black
120 Cream

FABRIC
100% polyester
220 g / m²



The measures indicated refer to sizes **S** for women, **L** for men. For one-size-fits-all garments, the measurements indicated are effective.

AVAILABLE COLOURS



000 Black



120 Cream

SIZE TABLES
AND CORRESPONDENCES

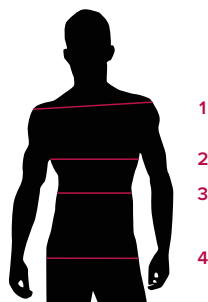


TABLE ST-C5 NORMAL FIT							
SIZE	XS	S	M	L	XL	XXL	XXXL
1 - SHOULDERS	38,00	39,00	40,00	41,00	42,00	43,00	44,00
2 - CHEST CIRCUMFERENCE	80-84	85-88	89-92	93-96	97-102	103-108	109-114
3 - WAIST CIRCUMFERENCE	68-76	77-80	81-85	86-88	89-95	96-102	103-111
4 - HIPS CIRCUMFERENCE							

SIZE GUIDE **1)** Take the anatomical measurements (body with underwear) without tightening, keeping the measuring tape taut. Note: in case you want to wear of the gowns already with the clothing underneath take the measurements already dressed. **2)** If there is a measure between 2 sizes between the measurements taken, we advise you to take the bigger one. **3)** The measurements in the table are expressed in centimeters.