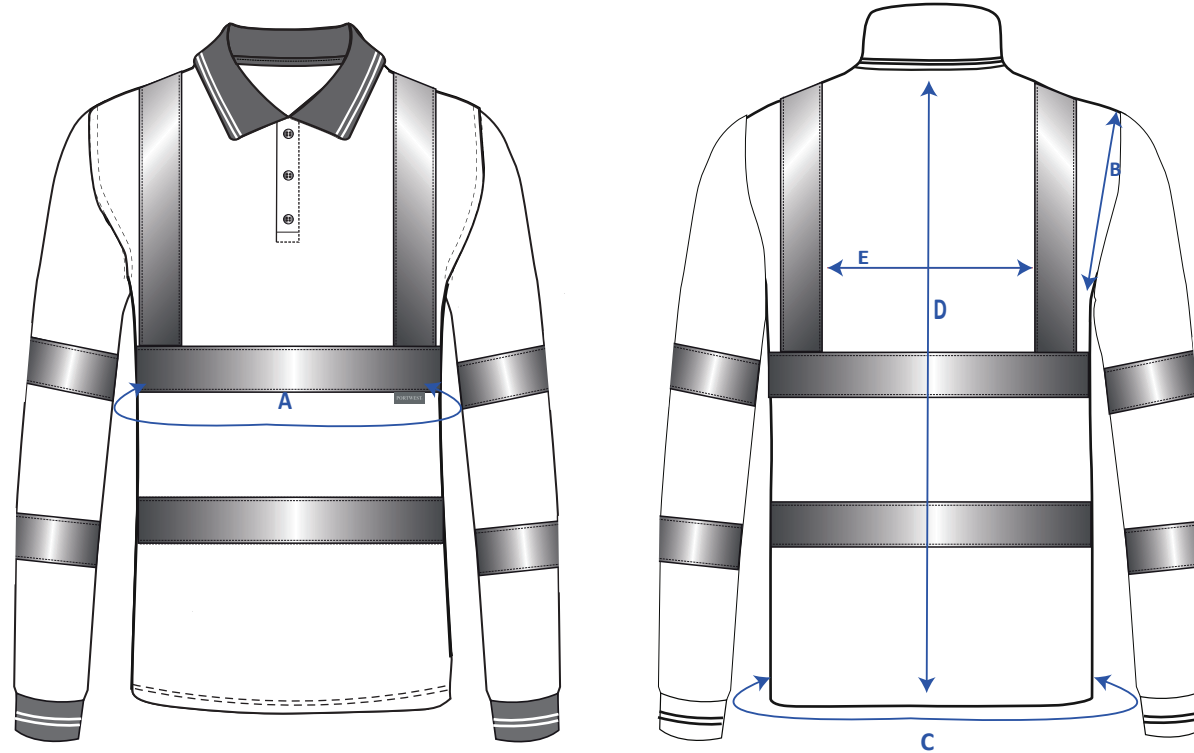


STYLE NO: S277

DESCRIPTION: Hi-Vis Long Sleeved Polo Shirt

FABRIC: 100% Polyester Bird Eye Knit, 175g/m2

COLOUR: Yellow/Orange



### Measurements in cm:

		S	M	L	XL	XXL	3XL	4XL	5XL	6XL	7XL
A.	Chest	106	114	122	130	138	146	154	162	168	176
B.	Armhole	26	27	28	29	30	31	32	33	34	35
C.	Hem circumference	106	114	122	130	138	146	154	162	168	176
D.	Centre Back Length	76	76	76	76	76	78	78	80	80	80
E.	Distance between vertical bands of reflective tapes	26	30	31	34	35	36	38	39.5	41	42.5