

SCHEDA TECNICA – POLO LION
COD. HH121

ROSSINI.

TESSUTO

100% cotone piqué

98% cotone piqué 2% viscosa
 solo per grigio melange

Peso 200 g/m²

DESCRIZIONE

Polo mezza manica con fascia parasudore di colore a contrasto nella parte posteriore del collo.

Collo chiuso con due bottoni, giro manica a costina, spacchetti laterali al fondo di colore a contrasto.

TAGLIE

XS, S, M, L, XL, XXL, XXXL, 4XL, 5XL



04 – VERDE



Il margine di tolleranza produttivo, nel rispetto delle dimensioni della taglia, può essere del +/- 3%

SIZE - cm	XS	S	M	L	XL	XXL	XXXL	4XL	5XL
C – ½ CIRCONFERENZA TORACE	49	51	53	55	57	59	61	65	69
D – LUNGHEZZA CENTRO DIETRO	66	68	70	72	74	76	78	80	82

 **TECHNICAL SHEET – LION POLO SHIRT**
CODE HH121

rossini.

FABRIC

100% cotton piqué

98% cotton piqué, 2% viscose
for melange grey only

Weight 200 g/m²

DESCRIPTION

Short sleeve polo shirt with
contrasting colour sweatband
on the back of the collar
closed with two buttons,
ribbed armhole, side slits at
the bottom in contrasting
colour.



01 – BLUE



02 – WHITE



04 – GREEN



05 – BLACK



06 – ROYAL BLUE



07 – RED



08 – YELLOW



09 – ORANGE



12 – MELANGE GREY



16 – ANTHRACITE



51 – BOTTLE GREEN

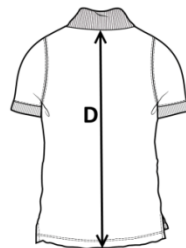


04 – GREEN



SIZES

XS, S, M, L, XL, XXL, XXXL, 4XL, 5XL



Measurements may vary +/- 3%, tolerance within size scale

SIZE - cm	XS	S	M	L	XL	XXL	XXXL	4XL	5XL
C – ½ CHEST CIRCUMFERENCE	49	51	53	55	57	59	61	65	69
D – CENTER BACK LENGTH	66	68	70	72	74	76	78	80	82



FICHA TÉCNICA – POLO LION

CÓD. HH121

ROSSINI.

COMPOSICIÓN

100% algodón piqué

98% algodón piqué 2% viscosa solo para gris melange

Peso 200 g/m²

DESCRIPCIÓN

Polo de manga corta con tira para el sudor de color en contraste en la parte posterior del cuello, cuello cerrado con dos botones, circunferencia de la manga acanalada, aberturas laterales en contraste en la parte inferior.



01 – AZUL



02 – BLANCO



04 – VERDE



05 – NEGRO



06 – AZUL REAL



07 – ROJO



08 – AMARILLO



09 – NARANJA



12 – GRIS MELANGE



16 – ANTRACITA



51 – BOTTLE GREEN



04 – VERDE




TALLAS

XS, S, M, L, XL, XXL, XXXL, 4XL, 5XL



El margen de tolerancia productiva, respetando las dimensiones de la talla, puede ser de +/- 3%

SIZE - cm	XS	S	M	L	XL	XXL	XXXL	4XL	5XL
C – ½ CIRCUNFERENCIA TORÁCICA	49	51	53	55	57	59	61	65	69
D – LONGITUD CENTRAL ESPALDA	66	68	70	72	74	76	78	80	82

 **FISA TEHNICA – TRICOU POLO LION**
COD. HH121

ROSSINI.

MATERIAL

100% bumbac piqué

98% bumbac piqué 2% viscoză
doar pentru gri melanj

Greutate 200 g/m²

DESCRIERE

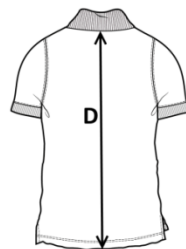
Tricou Polo cu mânecă scurtă cu bandă de protecție contra transpirației de culoare contrastantă pe partea din spate a gulerului, guler închis cu trei nasturi, manșetă la mânecă din catifea cord, despicături laterale în partea inferioară de culoare contrastantă.

MĂRIMI

XS, S, M, L, XL, XXL, XXXL, 4XL, 5XL



04 – VERDE



Marja de toleranță a producției, respectând dimensiunile mărimii, poate fi de +/-3%.

SIZE - cm	XS	S	M	L	XL	XXL	XXXL	4XL	5XL
C – ½ CIRCUMFERINȚĂ TORACE	49	51	53	55	57	59	61	65	69
D – LUNGIME SPATE	66	68	70	72	74	76	78	80	82

FICHE TECHNIQUE – POLO LION
CODE HH121

rossini.

TISSU

100% coton piqué

98% coton piqué 2% viscose
uniquement pour gris mélange

Poids 200 g/m²

DESCRIPTION

Polo demi-manches avec bande anti-transpirante de couleur contrastée dans la partie postérieure du cou.

Col fermé avec deux boutons, tour de manche côtelée, ouvertures latérales au bas de couleur contrastée.

TAILLES

XS, S, M, L, XL, XXL, XXXL, 4XL, 5XL



01 – BLEU



02 – BLANC



04 – VERT



05 – NOIR



06 – BLEU CLAIR ROYAL



07 – ROUGE



08 – JAUNE



09 – ORANGE



12 – GRIS MELANGE



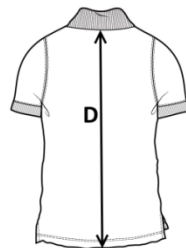
16 – ANTHRACITE



51 – VERT BOUTEILLE



04 – VERT



La marge de tolérance de production, dans le respect des dimensions de la taille, peut être de +/- 3 %

SIZE - cm	XS	S	M	L	XL	XXL	XXXL	4XL	5XL
C – ½ TOUR DE POITRINE	49	51	53	55	57	59	61	65	69
D – LONGUEUR CENTRE ARRIERE	66	68	70	72	74	76	78	80	82